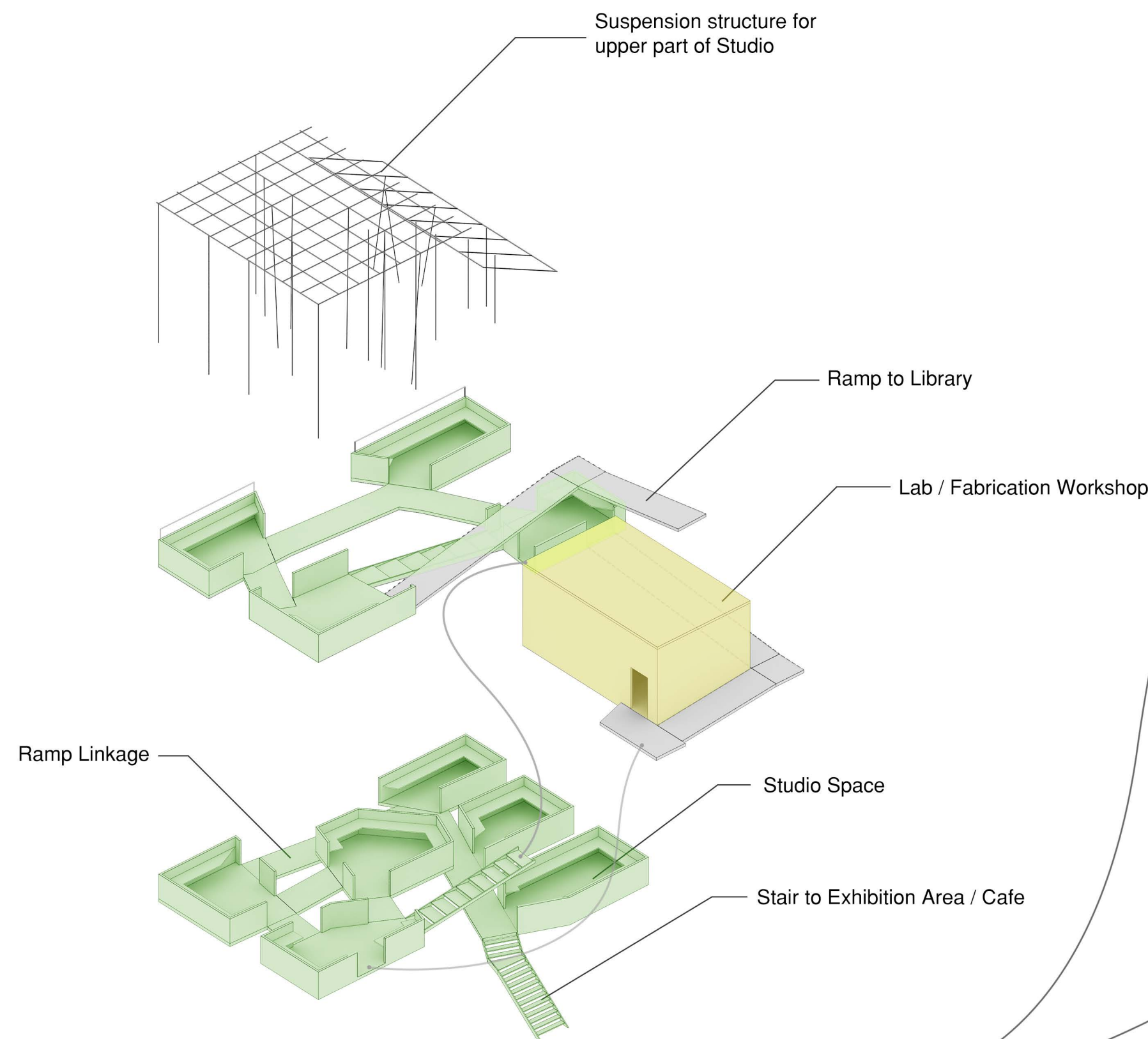
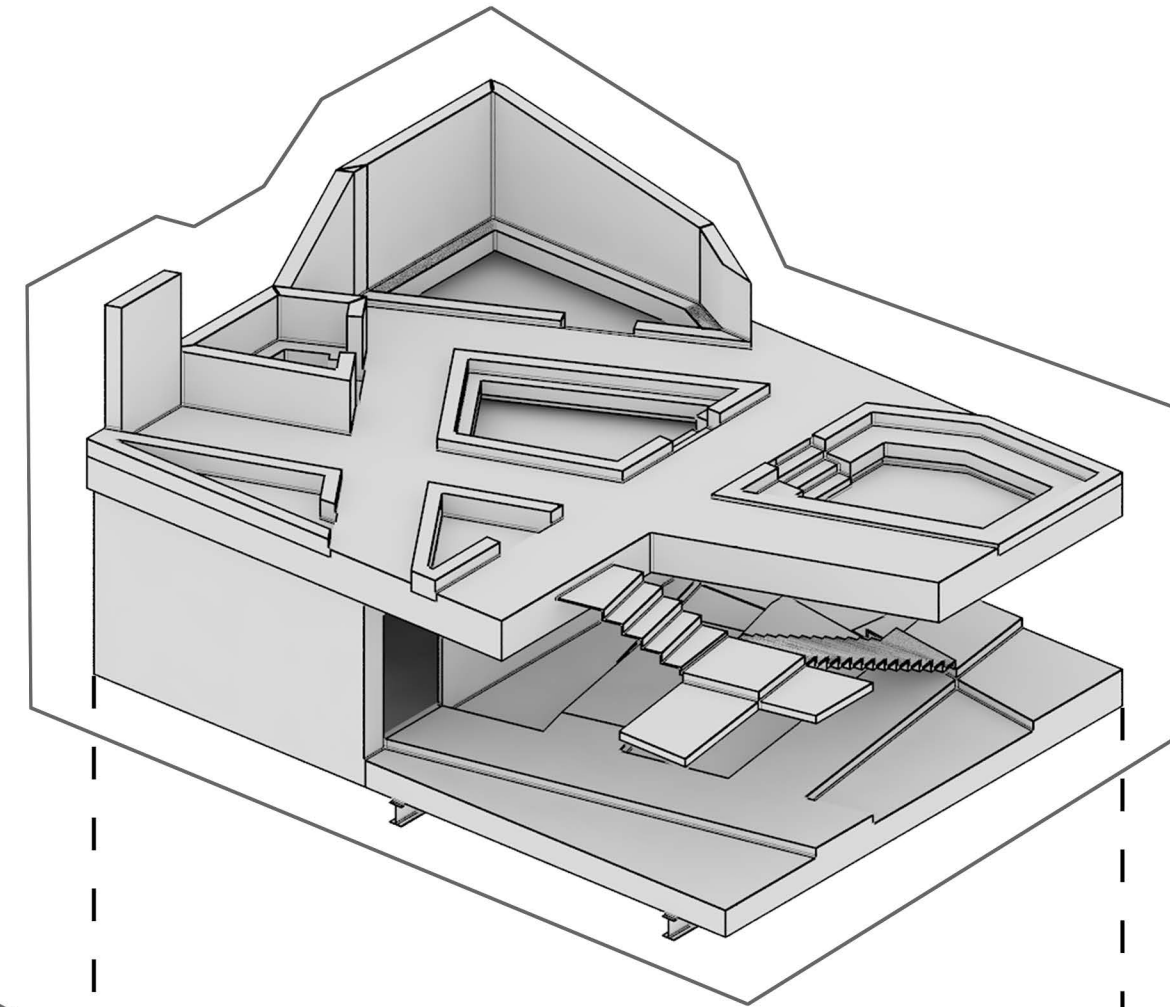


Collaborative Individualism

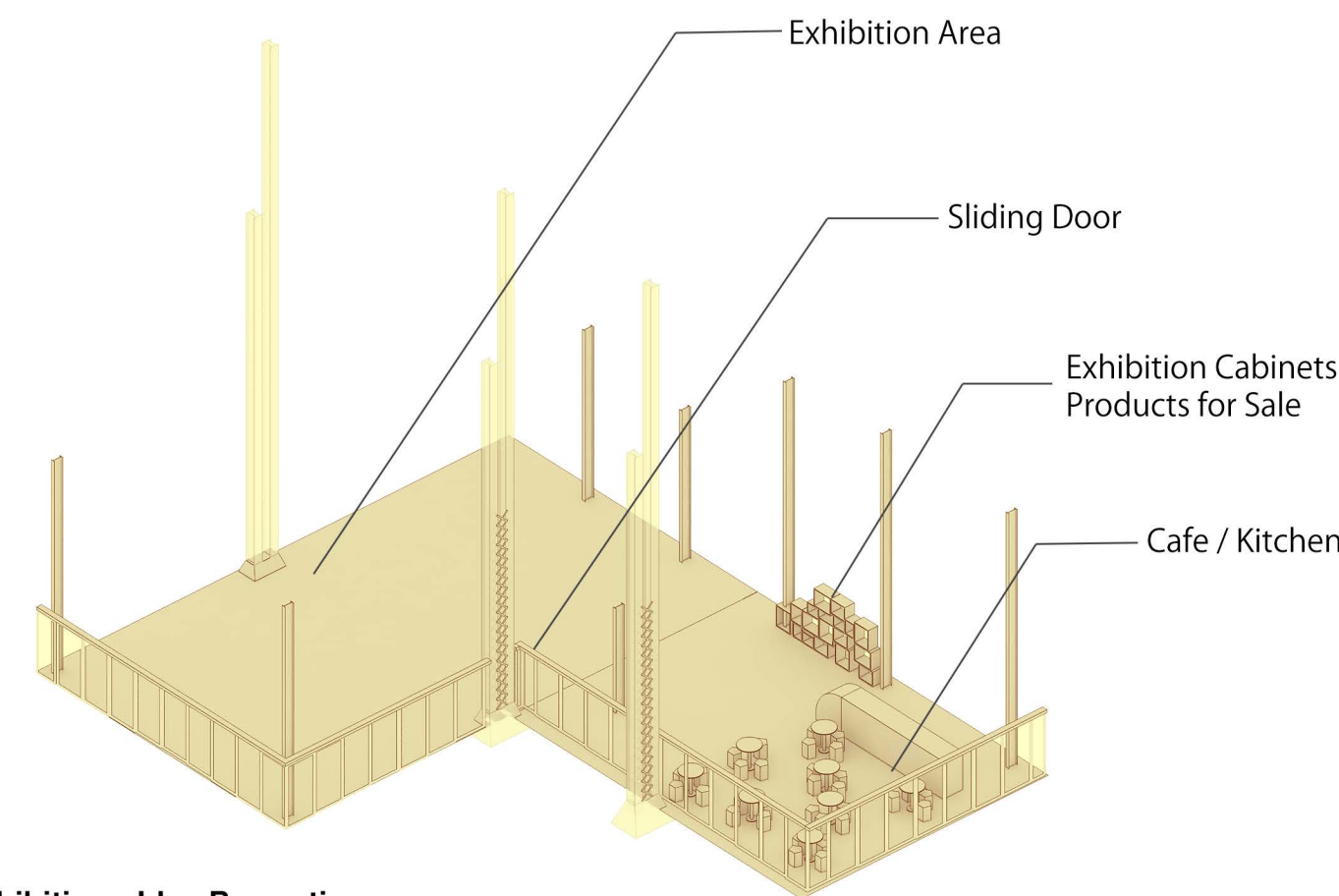
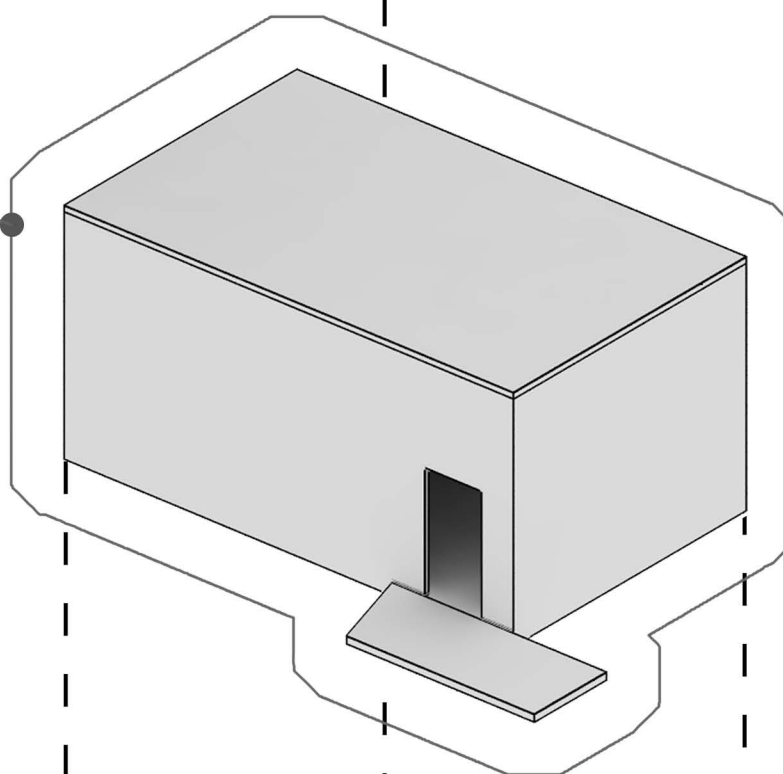
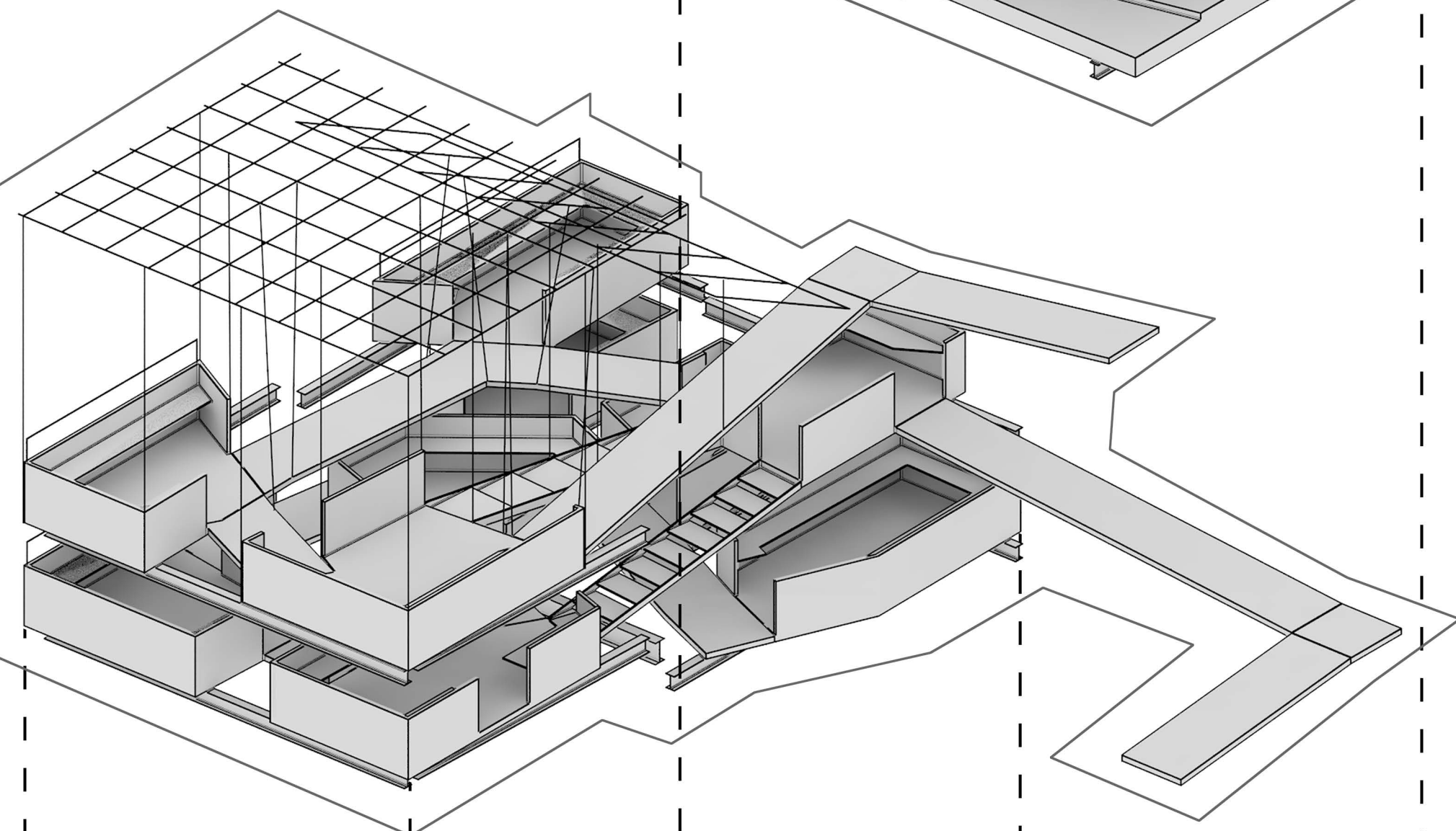
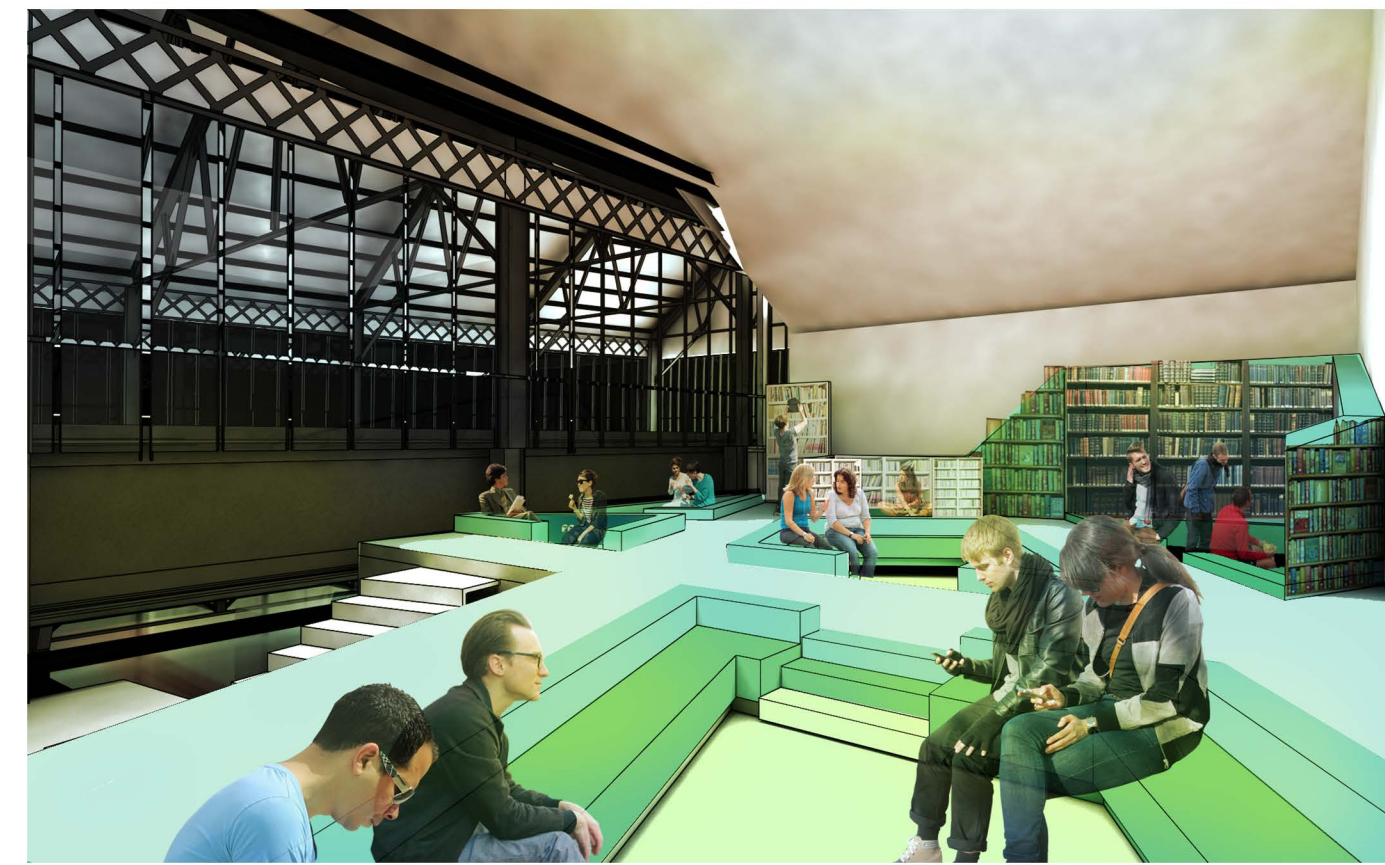
Modern movement emphasizes Individualism and Networking. People generates their own idea and products, shares them in public, and modifies other shared ideas for new results. Design can be both individualistic and collaborative. It may come up from an epiphany of the individual, or from discussion. Experimentations may be done by oneself or by many. Different methods of working is valid and gives different results. We propose a ONE Lab, that facilitates the full design process, from Idea Generation, Idea Experimentation, to Idea Promotion. The Lab is designed as a Flow of Ideas, from the most individual to the most public part of the design process, collaborative work and individual works can be done in an open atmosphere. To house the many ideas, the site is expanded to include the nearby studio space to form a whole body.



Studio / Lab - Idea Experimentation
In the internet age, every one is the author of their own projects, and the others' projects. Everyone have their own online space to showcase their works and their thoughts. The studio is a response to the modern culture. Separated floor plates provides separated working spaces for individuals or small groups to work in. Students can alter their own studio spaces to their needs. Ramps and stair-cases run through the studio, connecting the individual spaces into a network. Wide ramps and stairs provides places of encounter, invigorating the interaction between people. During the walk people will come by others' studio spaces, what one is doing can be known by others. Fabrication tools like CNCs, laser cutting machines, etc. may be provided in the Lab / Fabrication area.



Library - Idea Generation
The library is a vault of knowledge and experience. New ideas often comes out from a twist of old ideas, studying past experience enlightens one with new possibilities. A bit separated from the rest of ONE Lab, the library is a cozy corner with books and magazines for those who look for inspirations. Sunken sofas form several reading corners, providing both private reading spaces and discussion corners for users. Staffs are located next to the library, for students to conveniently invite teachers for a discussion when a great idea flashed into the mind.



Cafe / Exhibition - Idea Promotion
At the start of visitors' journey, and end of students' journey, it's the exhibition area and the cafe at the ground floor. Students and researchers of the ONE Lab puts their creative process into exhibition here, to share with others and also inviting others to share their ideas. Whenever they wanted an idea exchange, or wanted to conclude one day's work, they can get a space and some treats at the cafe, next to the exhibition area. Sliding doors are installed to maximize the openness of the ground floor. Lectures / presentations can be done at the ground floor. Image projection can be achieved by movable screens & projectors.



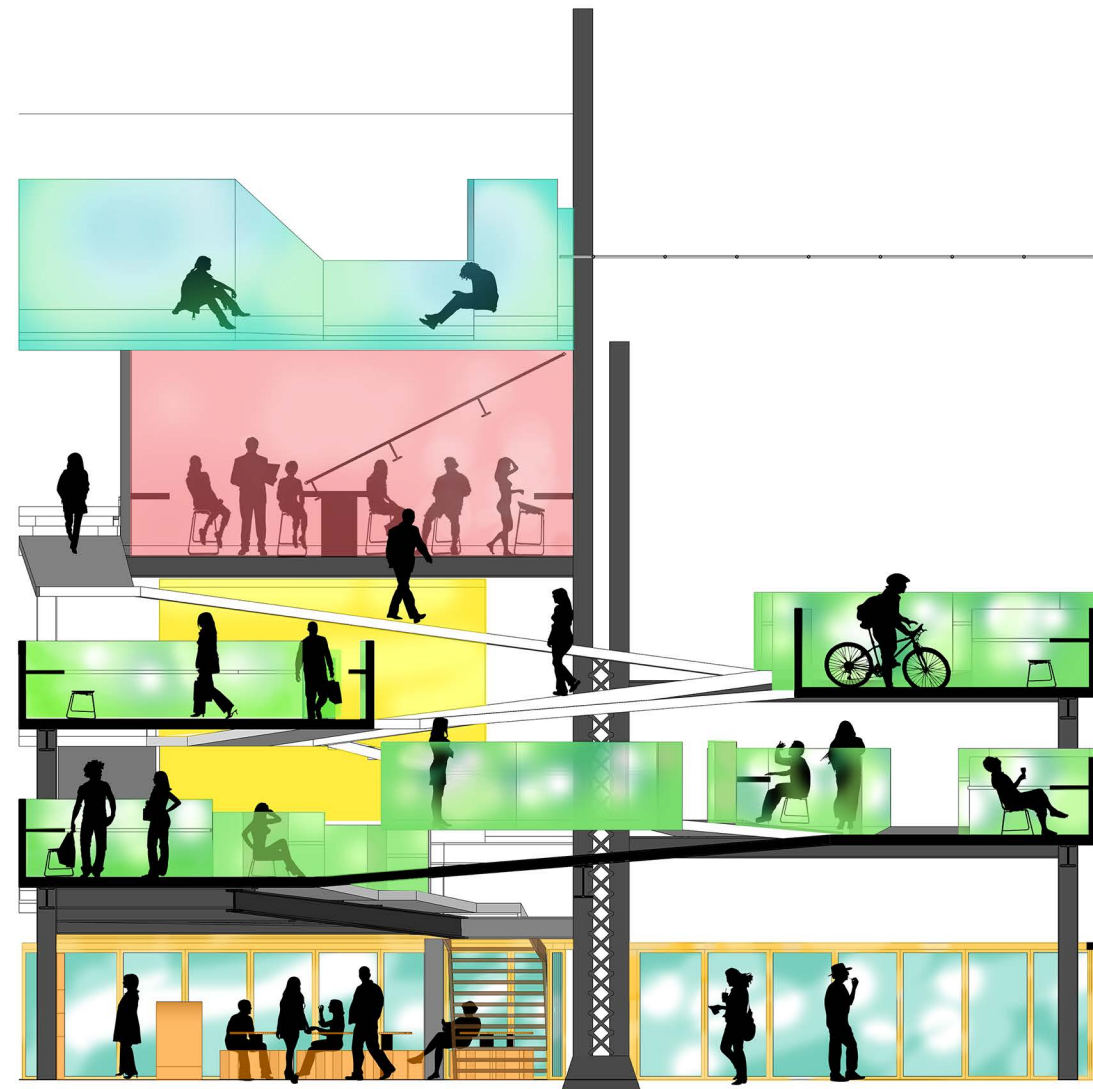
What should ONE Lab provide in Modern Movement?

Modern movement is about Individualism and Networking, In the last decade the 10 major changes in society are:
(according to <http://qideas.org/articles/ten-most-significant-cultural-trends-of-the-last-decade/>)

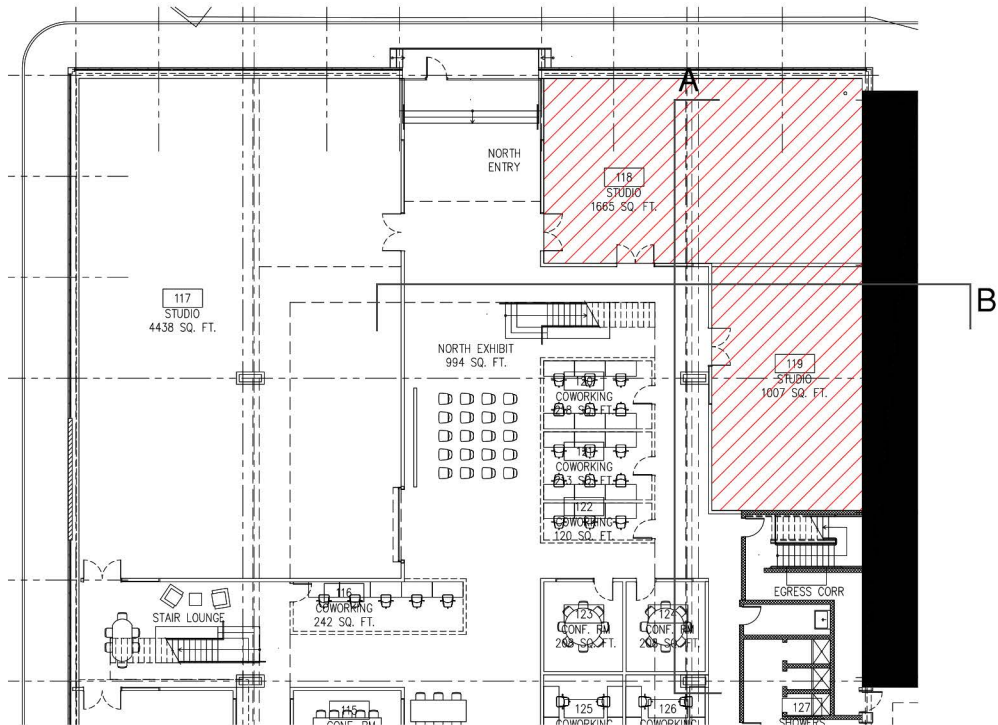
1. Connection
2. Place
3. Cities
4. The End of Majority
5. Polarity
6. The Self Shot
7. Pornography
8. Informality
9. Liquidity
10. Complexity

One Lab is an organisation that plans to provide New Opportunities of Economy and Cultural Influences. We therefore plan to create a space for experiment and workshops including Design + manufacturing, Incubation + Growth, Job Creation + Training, Rapid Prototyping, Freelance Economy, New Manufacturing, Education + Community.

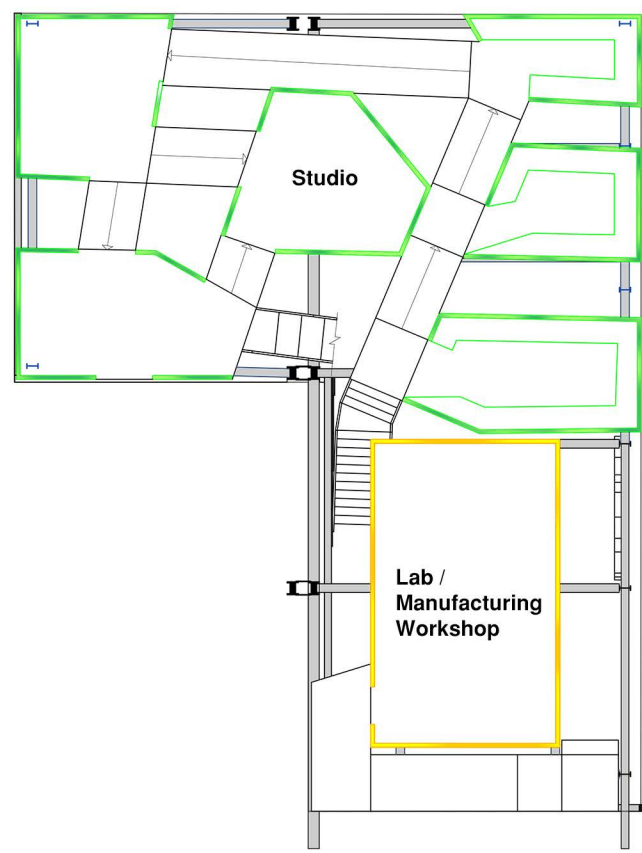
All those changes need an open atmosphere, a place where people are easy to communicate and share information. Sustainability and independent working patterns should be facilitated.



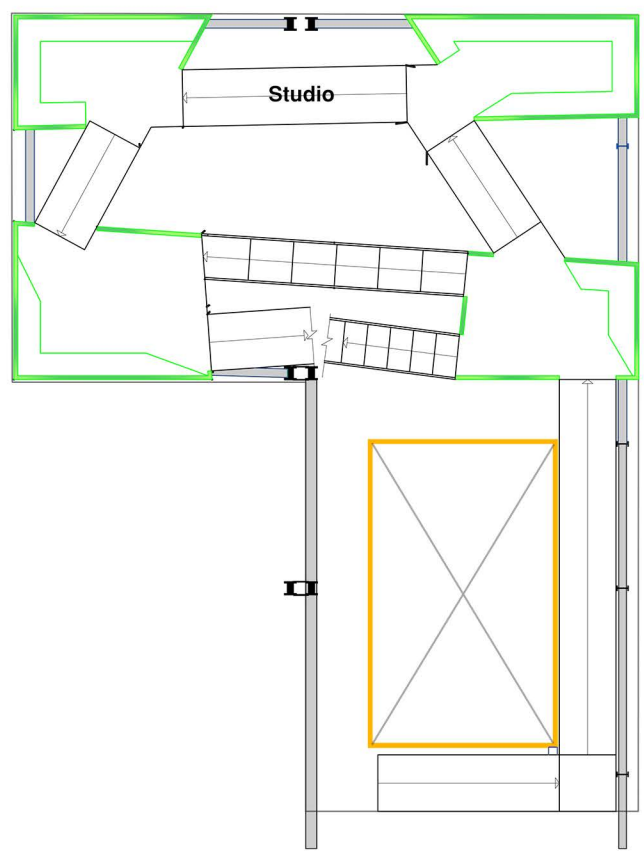
B-B'



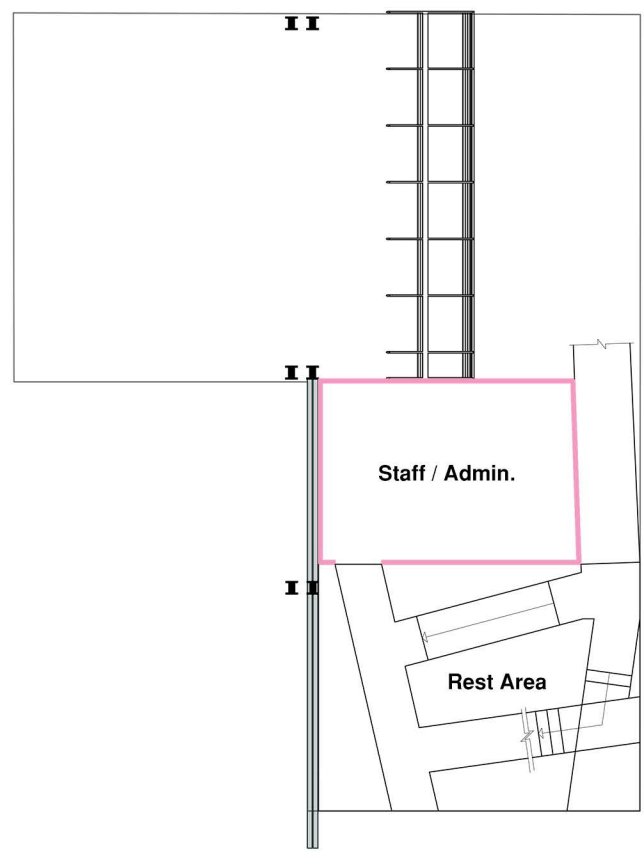
G/F



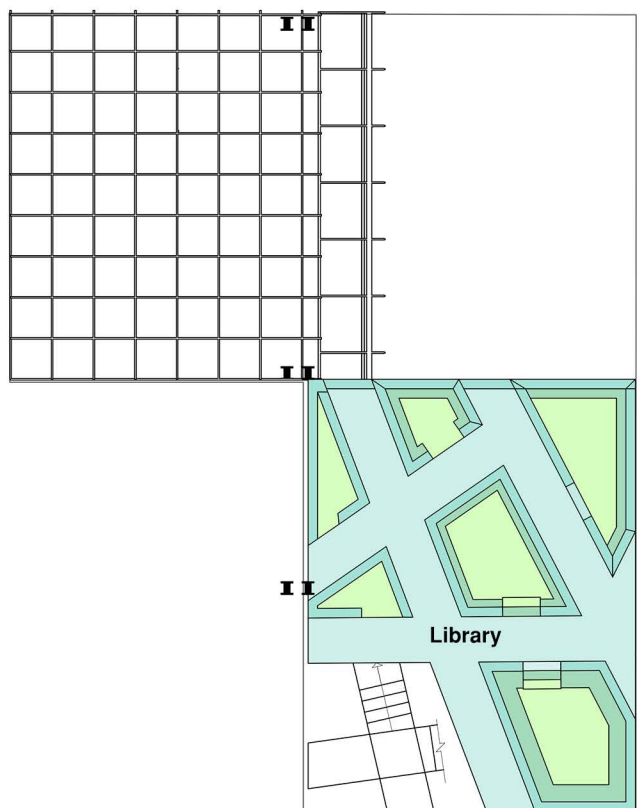
1/F



2/F



3/F

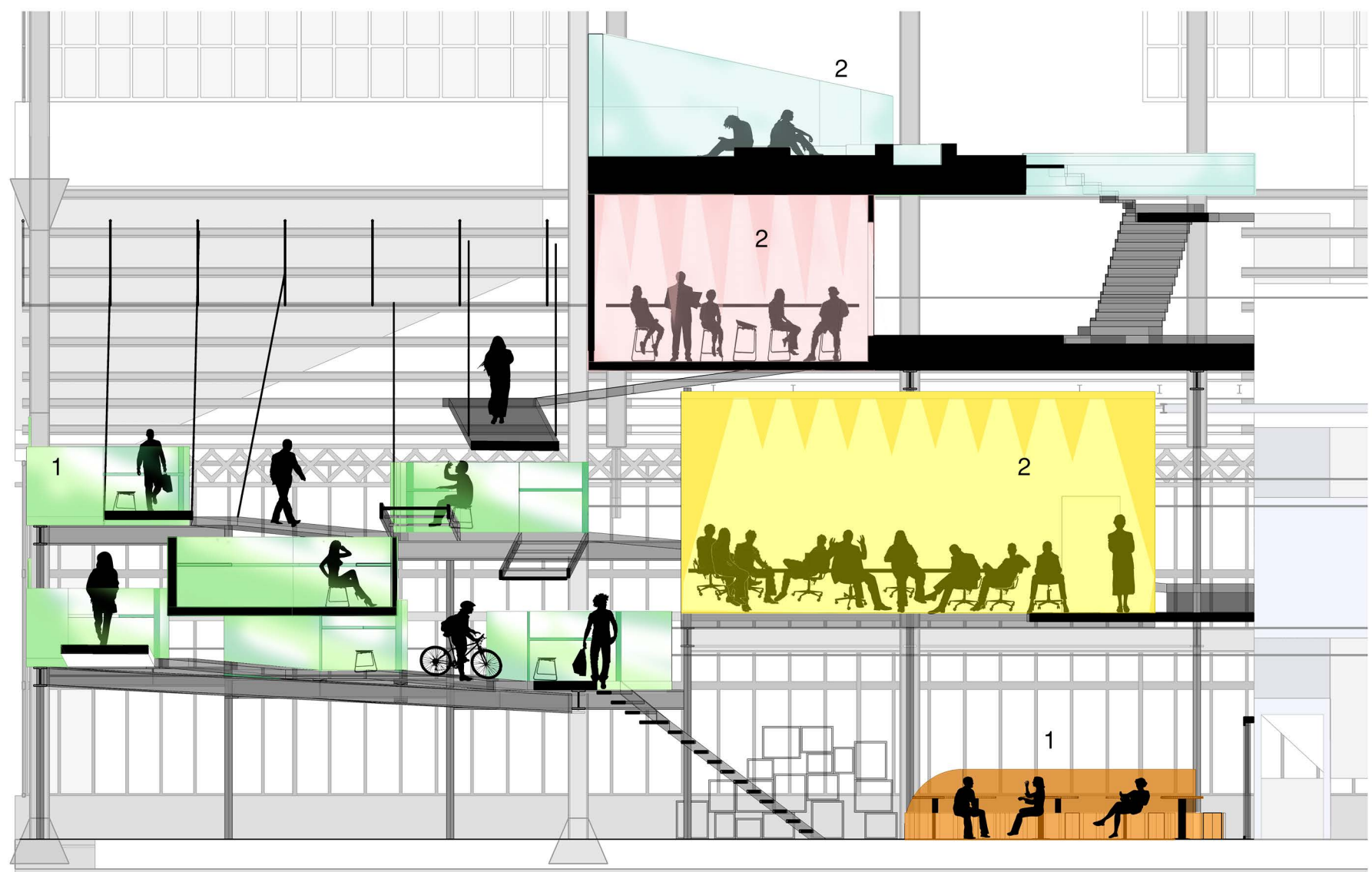


4/F

How should ONE Lab design be iconic to the organization?

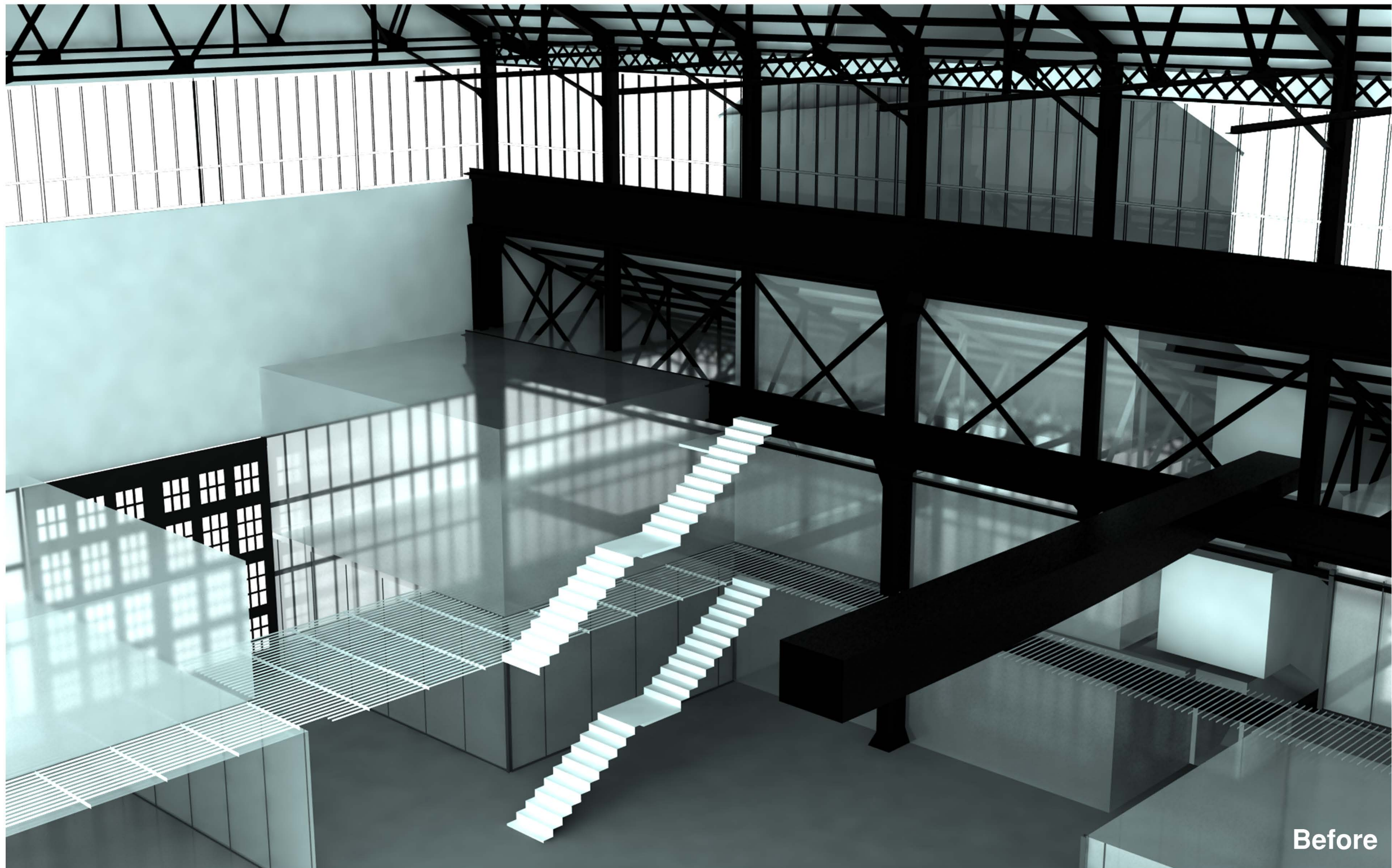
As ONE Lab is dealing with the changing world and the future world, the emphasis should not be the 'hardware' that is inflexible to change. Adaptive use of the facility should be promoted and also demonstrates the sustainability goals that is targeted by ONE Lab. The whole lab is itself a showroom.

Integration of projects into the lifestyle of the lab can be done in many ways. Cafe can sell foods that are the results of the research projects. Lighting can be achieved by new discoveries like using microorganism tubes instead of light tubes. It's a lot of new unimaginable progress in the future, so it is how the adaptive use of the environment that is the most iconic.

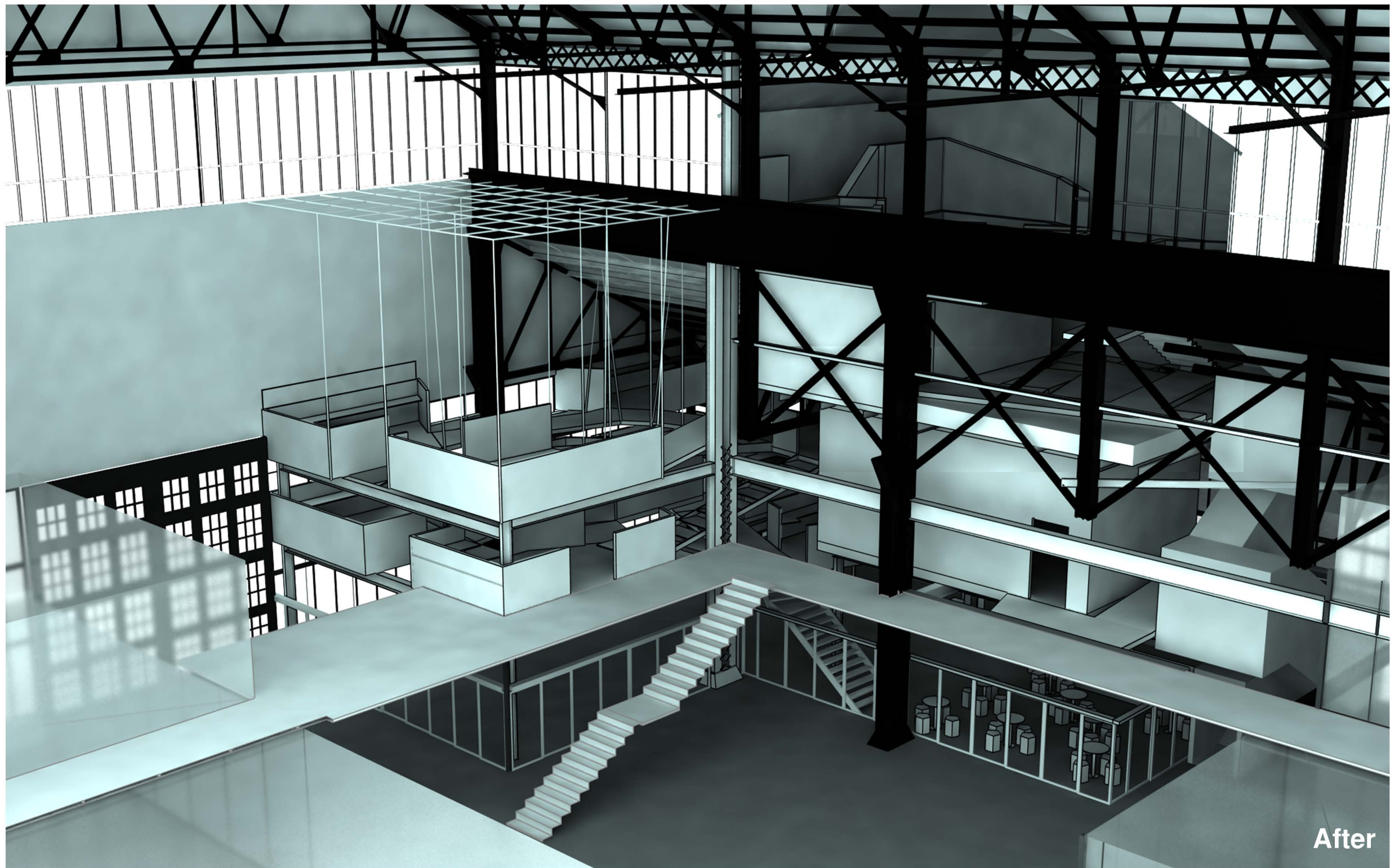


A-A'

Lighting:
1. Natural Light from the facade windows
2. LED light



Before



After